

J-Day Wall Horn

for Fostex FE206 | designed by John Day | drawn by dld | 07-april-11

for non-commercial use only

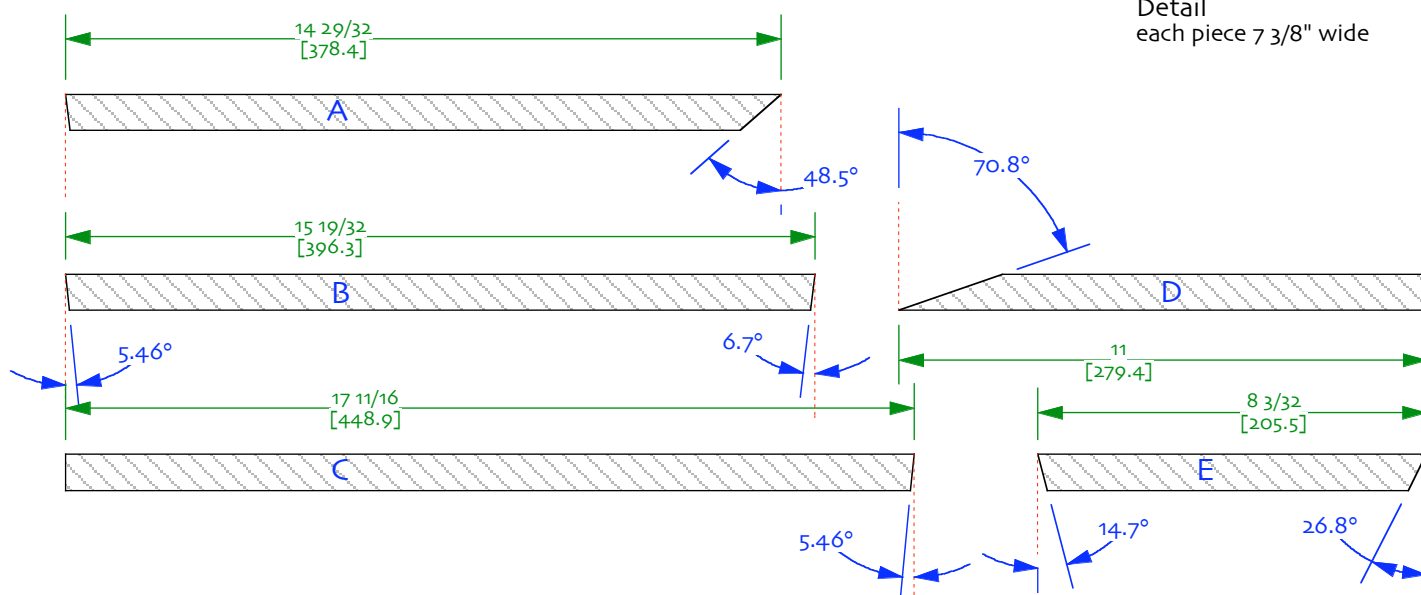
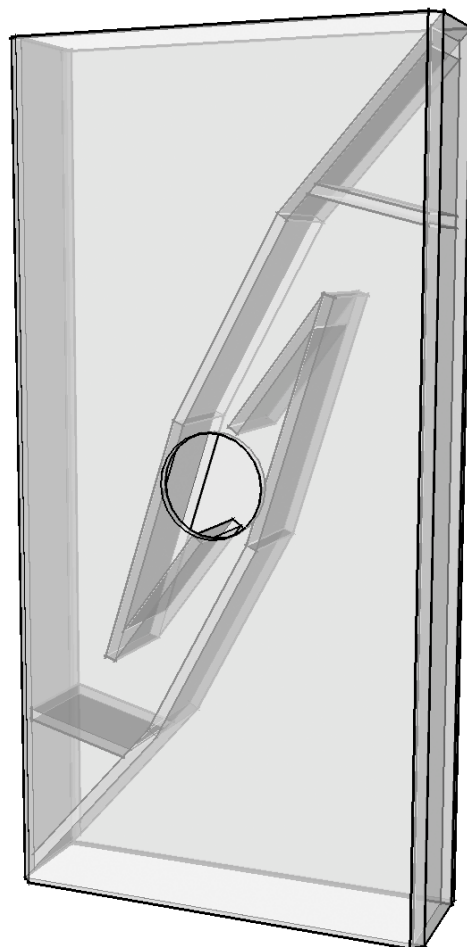
A bifurcated horn for the Fostex FE206 designed to be wall mounted. Ideally placed midway between floor & ceiling on an 8 foot tall wall

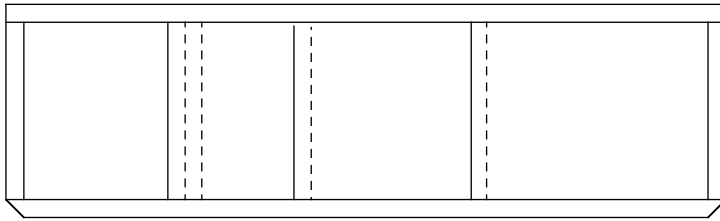
I built these in 2006, after making the design in my head, then playing with flare rates and practical dimensions, until I squeezed a 40 Hz flare rate and 1/4 wavelength at 40 Hz into a half sheet of (60" x 60") Baltic birch

The bass is quite good to 50 Hz in an 8 foot tall room. Bass is weaker in a high vaulted ceiling room. I had them in one for awhile and was very much happier when I got them into an 8 ft room. Amp output impedance will have some effect

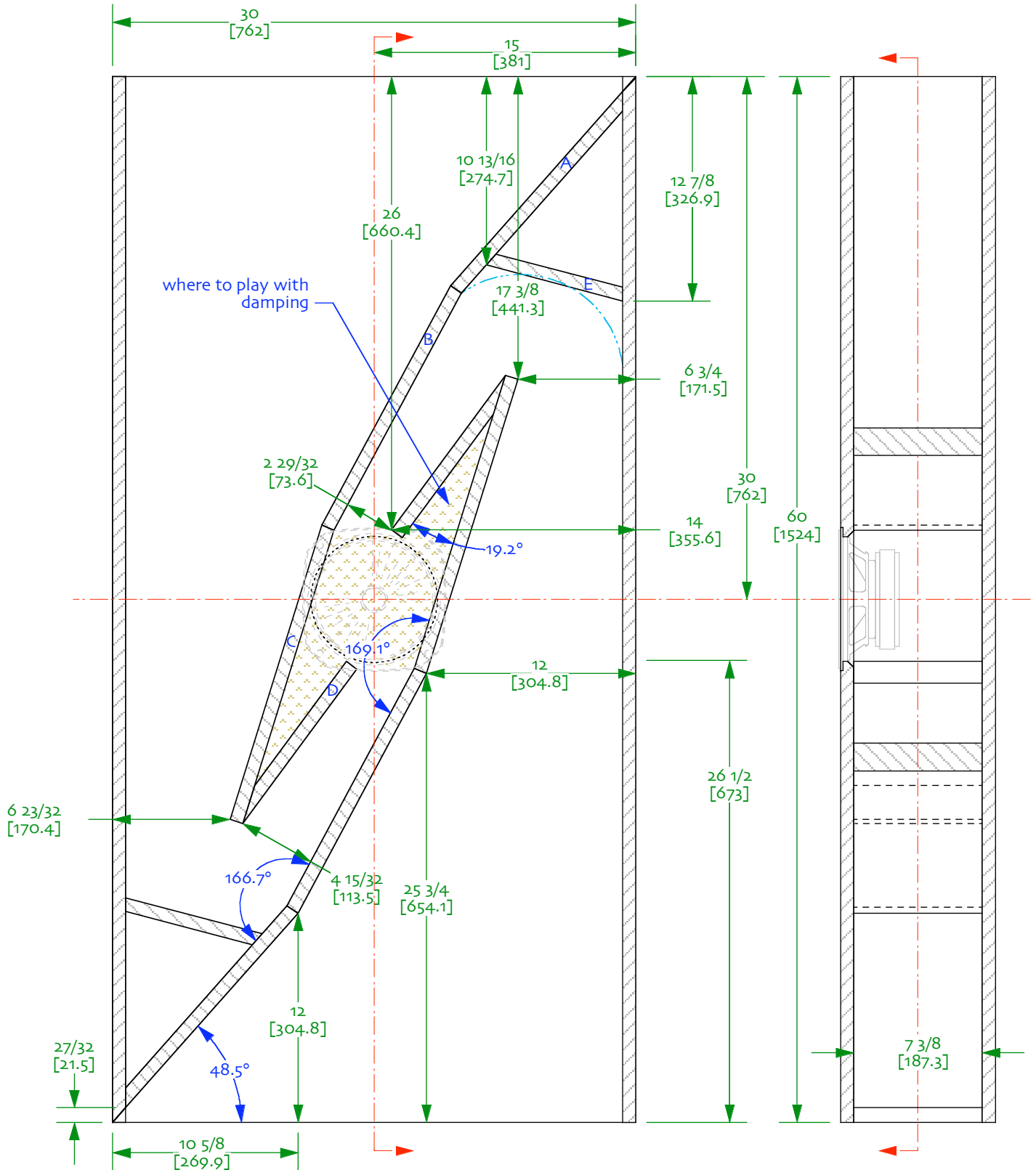


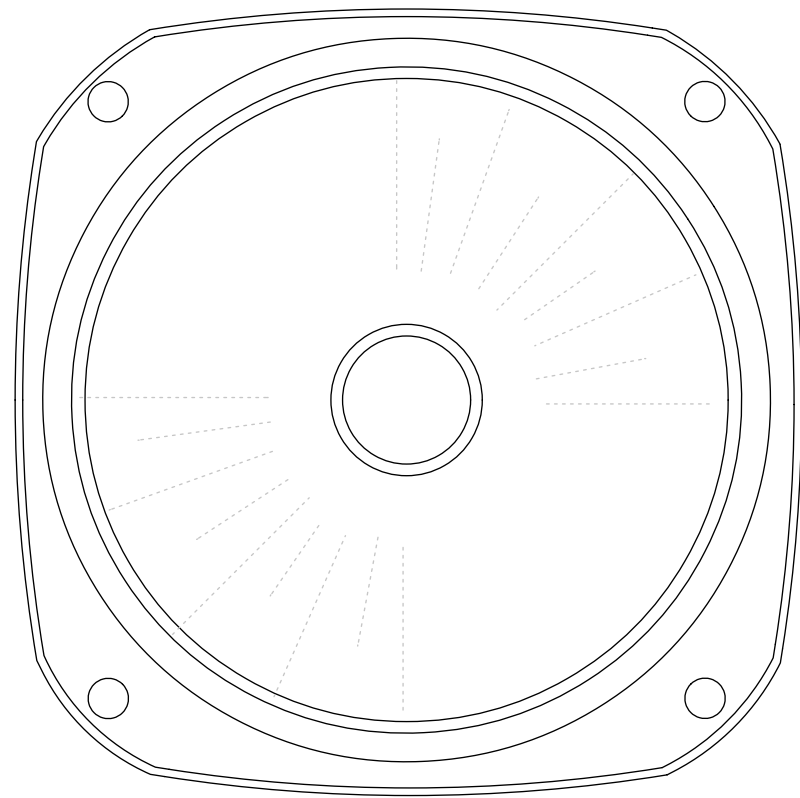
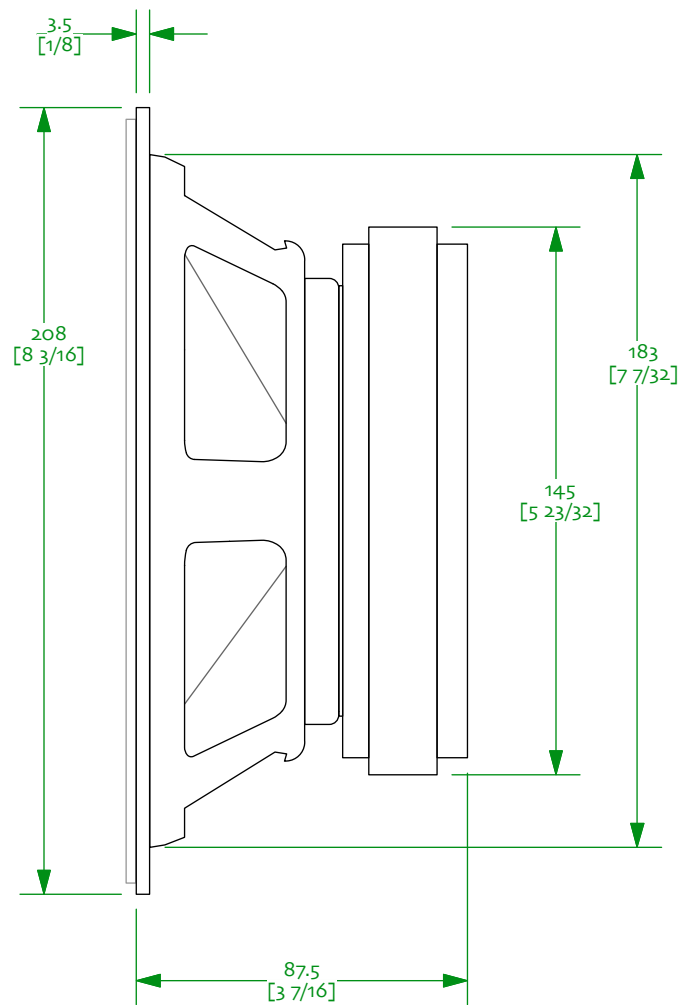
Notes
o/ drawn with $\frac{3}{4}$ " (19.1mm) material. Quality multi-ply (ie Baltic Birch) recommended
1/medium carpet foam to line the chamber just behind the driver, and I found a thin fluff of wool in there, very light and fluffy, to clean up the lower voice
2/The center of the 8" driver cutout is the very center of the sheet of plywood.





J-Day Wall Horn
for Fostex FE206
designed by John Day
drawn by dld | 07-april-11
for non-commercial use only





Fostex FE206En

Dimensions ov9

06-november-2016 | drawn by D Dlugos
© 2009-2016 planet_10 enterprises limited